



Highways and Municipal Department



This Department is responsible for assets and providing important services to ensure a clean and safe environment for Gwynedd residents.

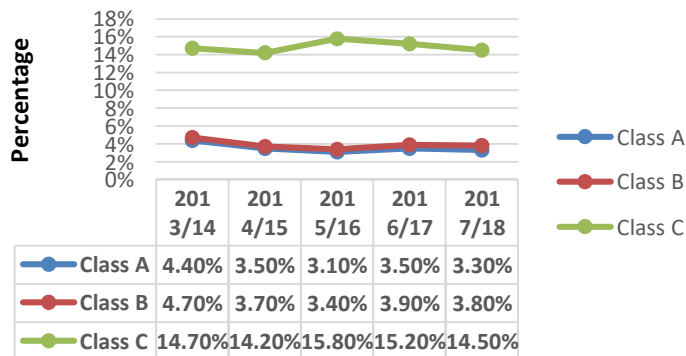
Highway Maintenance



It is important that Gwynedd businesses and residents can move with ease and safely within the county and, in order to ensure this, the Council maintains 2,697km of **county roads** along with 199km of **Trunk Roads** (namely highways of national importance, on behalf of Welsh Government). At present, our highways in Gwynedd, namely Class A and B roads, are in a good condition with less than 4% defective and in need of attention.

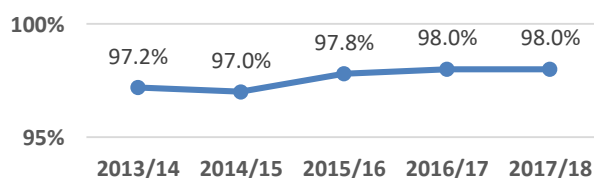
With a reduction in the relevant budget, the deterioration in the condition of our Class C and unclassified roads continues. As a result of the financial pressures on the Council, it is inevitable that there will be further pressures on road maintenance, and it will be challenging to prevent deterioration in the quality of our roads, in particular lower priority roads namely Class C and unclassified roads.

Percentage of Defective Highways



There is now a new national Code of Practice in force which emphasises risk management. By now, work is afoot across Wales to develop consistent action plans when inspecting the condition of roads. As part of this work, we are in the process of reviewing and updating our Highways Assets Maintenance Plan.

Percentage of incidents of dangerous damage to roads and pavements which were repaired or made safe within 24 hours of the time that they were...



In future, we will seek to prevent a sudden decline in the quality of our roads.

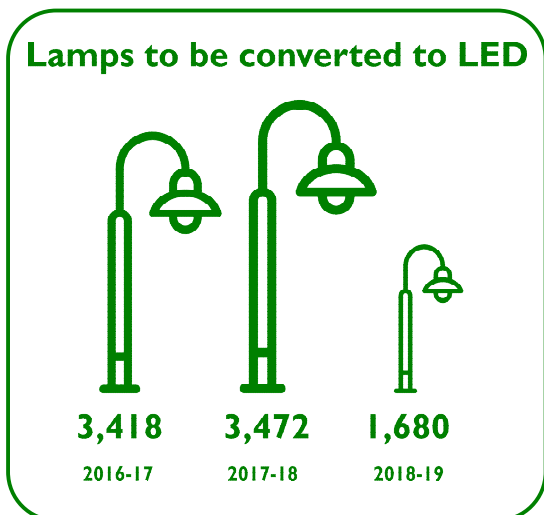
Gwynedd Council is responsible for leading a partnership of seven Councils in north and mid Wales to manage and maintain 1100km of Trunk Roads (Welsh Government nationally important highways).



Asiant Cefnffyrdd Gogledd a Chanolbarth Cymru
North & Mid Wales Trunk Road Agent

Our Highways Works Service is responsible for the maintenance work along with dealing with accidents and incidents because of severe weather.

Street Lighting



We maintain 18,705 **street lights** and 6,067 **illuminated signs** in order to make our roads safer and for residents to be able to use our streets safely after dark. The lights use electrical power, which has a detrimental impact on the environment in terms of carbon emissions and light pollution.

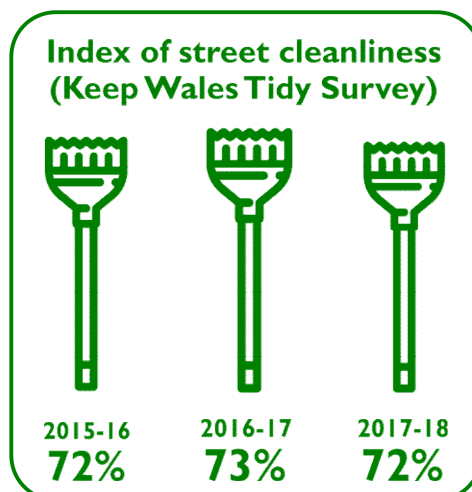
Over the last three years we have been changing street lights and signs to LED (light emitting diode) technology with the majority of them dimming or switching off when appropriate. This is for the purpose of reducing energy costs, carbon emissions and preventing light pollution today and for the future.

In terms of the local environment, it is extremely important that our **streets are clean and safe**; streets must therefore be cleaned regularly. The appearance of streets and public spaces is important to the residents of Gwynedd, and there is a small team of officers responsible for dealing with environmental crimes such as fly-tipping, graffiti and dog fouling. On average, we take 1.76 days to clear items of fly tipping after receiving notice of them. The Cleanliness Index is used to assess the cleanliness and appearance of streets.

Street Cleaning



Keep Wales Tidy carries-out a survey to assess how many 'defects' such as rubbish, weeds, dog fouling, chewing gum and cigarette stumps can be found on our streets. According to the independent survey, the cleanliness and appearance quality of Gwynedd streets continues to be good, and it appears that a recent change in behaviour for the better is likely to prevent mess.





Percentage of graffiti and posters which hide traffic signs and cause hazards which are cleaned/cleared within 24 hours of the time that they are reported

100%

Percentage of highways and associated land inspected which have high or acceptable standards of cleanliness

98.5%



Waste Collection and Recycling

It is vital to deal with **waste** in a correct way in order to protect our environment and avoid creating problems for our children and our children's children. Burying waste in the ground causes pollution to the land, water and the air. It is necessary to increase recycling, reusing and composting waste to avoid this.

Gwynedd Recycling



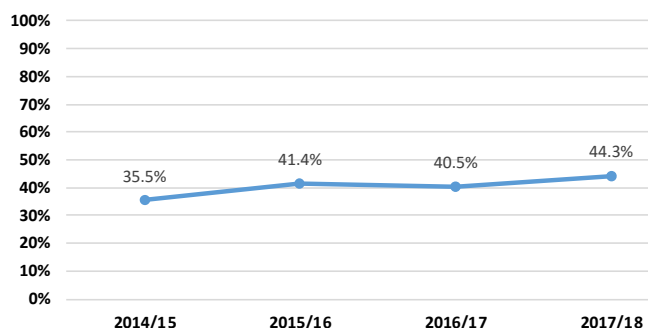
The changes to refuse collection arrangements every three weeks and collecting food waste and recycling materials weekly, has led to an increase in recycling. Changes to garden waste collection arrangements and to collection vehicles which are less harmful to the environment have also been implemented.



We have completed over a million waste collection from Gwynedd houses within a period of three months. From these collections, some are missed, and although the figure is low (less than 1%) we recognise that this failure is important to the resident. The Department now collects information to understand why this happens and to ensure new arrangements for improving performance and responding to problems relevant to waste collection. Welsh Government has set ambitious targets for the purpose of reducing landfill and increasing recycling. The Council would incur significant fines if the targets are not reached.

We will seek to build on the increase in recycling by residents and businesses in order to improve our recycling performance again this year.

Percentage of commercial recycling/ composting levels



In response to complaints about mess and rubbish falling from/being left by waste and recycling collection vehicles, a number of steps have been put in place to try to improve the situation. This includes using Romaquip vehicles rather than Kerbside vehicles, which means that there is no tipping above the height of the vehicles and they are therefore safer for the workforce. Using these new vehicles also means a reduction in the number of materials falling from the vehicles as materials are not stored freely when moving from property to property which leads to better arrangements when serving the cartgylchu. We will continue to respond to our residents' concerns and ensure an improvement in the situation by focusing on the smaller vehicles.

We also continue to work on the Bangor Image project which is progressing well. This is a partnership with representatives from the City Council, BID Bangor, Bangor University and several other organisations. The group's main focus is to improve the City's image. We will learn from this work in Bangor and will then introduce it in other areas. We also work with a group in Dyffryn Nantlle to improve the area's appearance. We will learn from our experiences of working with Bangor project as we continue with this work.

Municipal Assets



We manage Bangor Crematorium and 16 of the County's biggest and busiest cemeteries.

The bereavement service is crucial to residents, and it is our aim to ensure a bereavement service which is appropriate and respectful.

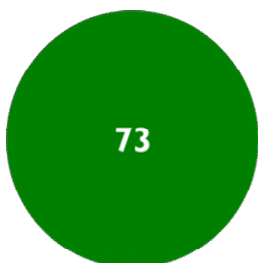
CCTV

In order to safeguard the community, we maintain a network of **CCTV** in the populated areas of the County, namely Bangor, Caernarfon and Pwllheli. The service attracts income from others, but it is not sufficient to meet the costs of provision.



Last year, approximately 3000 criminal and anti-social incidents were monitored.

It is our aim to continue with the work of safeguarding the community



Public Toilets



Community Toilets

The Department is responsible for maintaining and cleaning the County's public toilets along with managing a scheme to provide other toilets (community toilets) which are open to the public by businesses and groups in the community. The Council does not have to provide public toilets, and residents did not prioritise the provision during the Gwynedd Challenge exercise. As there is a limited budget, other ways of providing the toilets must be identified through partnerships with the County's Town and Community Councils.

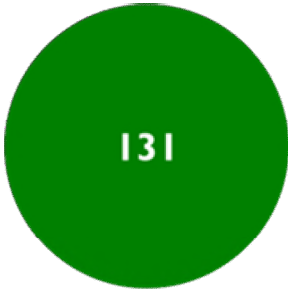


By creating partnerships, we will seek to keep public toilets open throughout the county.



The Department is responsible for maintaining **roadside and open spaces** in order to improve the environmental quality of our towns and villages and to make it safer for residents. Although grass is cut less often, public safety must be ensured. The Department cuts grass for other Council Departments, and for other establishments e.g. schools, leisure centres, residential homes and Cartrefi Cymunedol Gwynedd.

We will promote wildlife whilst keeping our towns and villages tidy and safe.



Playgrounds with equipment for young children

4

Playgrounds which have equipment older children

Every child, parent and child minder appreciates playgrounds, and we maintain 131 of them across the County. Playing equipment is very expensive, and money for buying new equipment is very scarce.



We also maintain playgrounds so that they are safe for children and young people to be able to enjoy them.

2017/18 Events Programme

- 16 Litter / fly-tipping cleaning campaigns with the community**
- 11 Clean environment road shows in schools**
- 8 Dog fouling prevention projects in the community or in schools**
- 22 Visits to promote recycling in schools**

The Department is responsible for holding **events to educate** and raise the awareness of children regarding recycling waste and preventing litter, graffiti, fly-tipping and dog fouling problems. We also organise local environmental improvement campaigns with schools and community groups. This is important work to change behaviour in order to promote a clean and safe environment today and in the future.



It is our aim to continue with this programme of events and campaigns throughout the County