

Building For The Future - Residential Services for Older People in Gwynedd



"Making it easier for older people to live full and independent lives"

Newsletter 3

May 2008

Welcome to the third edition of Gwynedd Council's Newsletter which shares the latest news and plans for developing suitable residential services for older people in Gwynedd.

During the last few months, we have been working hard with local partners to move the Project forward in the four areas of Bala, Bangor, Ffestiniog and Porthmadog. The following highlights what has been achieved so far:

Extra Care Housing Boost for Bala and Ffestiniog

Older people in Bala and Ffestiniog will soon have access to Extra Care Housing, following confirmation that Gwynedd Council has secured £8.6 million of Welsh Assembly Government funding.

Gwynedd Council can now move ahead in partnership with Cymdeithas Tai Clwyd Housing Association in Bala to provide 30 purpose built Extra Care housing units, and with Cymdeithas Tai Eryri Housing Association in Ffestiniog to provide 40 Extra Care Housing units. All units will include on-site care and specially designed facilities to support older people to live independently and securely in their own homes.

"We are very pleased to hear of the announcement, which will bring significant benefit for both the Bala and Ffestiniog areas. I look forward to the building work starting on the project as soon as possible, and I am

confident that these developments will make a real difference to the quality of the services on offer for older people in both areas," said Dafydd P Lewis, Gwynedd Council's Strategic Director – Care.

"With funding from Cymdeithas Tai Eryri and Cymdeithas Tai Clwyd, the projects will deliver an overall investment worth almost £14 million for both communities," he added

The accommodation in Bala and Ffestiniog will include a mixture of one and two bedroomed units featuring state-of-the-art care facilities and technology that will adapt to the changing needs of the resident. Communal facilities in each development may include a restaurant, activity room, hairdresser, small shop and guest rooms.

It is anticipated that work will start on site in Bala during 2009/2010 and 2011/2012 in Ffestiniog.

www.gwynedd.gov.uk/buildingforthefuture



Building For The Future - Residential Services for Older People in Gwynedd

“Making it easier for older people to live full and independent lives”

Alwyn Llwyd, Chief Executive of Tai Clwyd Housing Association said:

“Cymdeithas Tai Clwyd is extremely glad to hear that Gwynedd Council's application for funding from the Assembly Government to build 30 extra care units on the Cysgod y Coleg site at Bala has been successful. We are very much looking forward to working in partnership with Gwynedd Council and others to provide these units and to contribute towards fulfilling the need locally for this type of provision.”

Walis George, Chief Executive of Cymdeithas Tai Eryri added:

“We were thrilled to hear that the partnership had succeeded in attracting an allocation of £4.8 million in grant funding from the Assembly Government for the provision of 40 extra care units in Llan Ffestiniog. This type of provision will be a great boost towards improving the quality of life of older people in the area, providing first class care services for future residents. By cooperating with Gwynedd Council, the health sector and other partners over the next two years, we hope to ensure that the development will be ready for the first residents during 2013.”

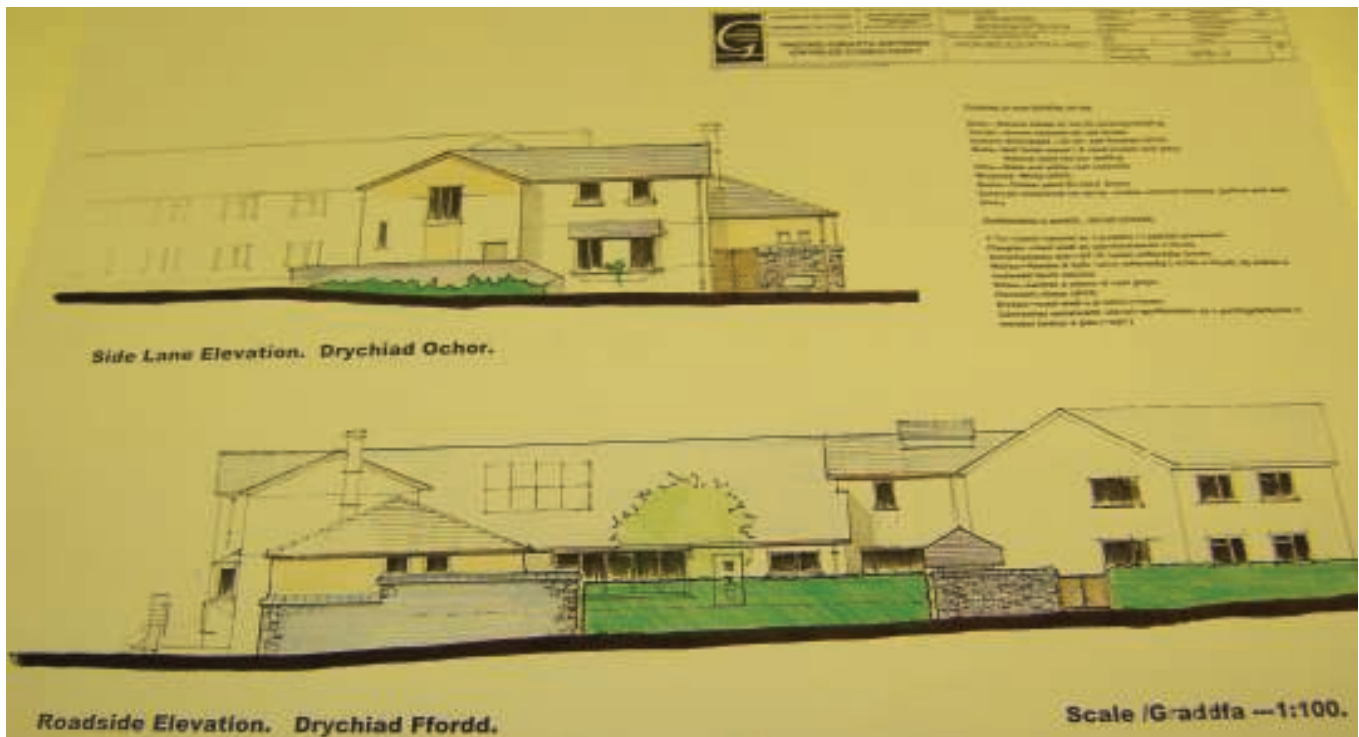
Funding secured from Gwynedd Council

Funding has also been secured by Gwynedd Council which will enable the development of additional residential options for people living in the Ffestiniog and Bangor areas.

Ffestiniog

Ten en-suite bedrooms and a range of service facilities that allow care and support to be provided to suit individual needs, will be developed at the Bryn Blodau Residential Care Home, Llan Ffestiniog. This extension will focus on supporting people with fluctuating social care and healthcare needs, enabling them to be cared for in their own community.

It is anticipated that work will start on site during September 2008, subject to obtaining planning permission.



Drawings of extension to Bryn Blodau Residential Care Home, Llan Ffestiniog

Building For The Future - Residential Services for Older People in Gwynedd

“Making it easier for older people to live full and independent lives”



Helping older people to maintain independence in their own home.

Bangor

The extension to the Plas Hedd Residential Care Home will have a particular focus on supporting people with dementia who have residential care needs.

A new day care centre will also be developed which will cater for up to 25 people.

It is anticipated that work will start on site early in 2009, subject to obtaining planning permission.

Non Grant Funding

Whilst we are delighted that Welsh Assembly Government funding has recently been secured for the extra care housing provision at Bala and Ffestiniog, we also hope that funding will be earmarked for the proposed developments at Porthmadog and Bangor in the near future. However, it is essential that we keep up the momentum on developing Extra Care Housing in the Porthmadog and Bangor areas. As a result, the Council is in discussion with Cymdeithas Tai Eryri and North Wales Housing Association to consider various other options on how to fund the Extra Care Housing developments.

Planning Application Process

In the second newsletter we reported that outline planning applications had been submitted to the Snowdonia National Park and Gwynedd Council. To date, approval has been given to the proposed site for

the Bala development, subject to finding alternative site for the football pitch, and on one of the favoured sites in Bangor. Further discussion is taking place around the Ffestiniog development.

Local groups have met to work on the detailed planning of all the developments within the project. This will involve consulting widely with Gwynedd Council, North West Wales NHS Trust, Gwynedd Local Health Board, the voluntary sector, older people and their carers, specialist advisors for example the Dementia Services Development Centre Wales and representatives from the local community.

Local Area Forums

Over 140 people made up of representatives from Town and Community Councils, internal and independent providers, voluntary organisations, Gwynedd Council and Health Organisations attended the Local Area Forums held in January. Participants heard more about the Building For The Future Project and were introduced to possible options for providing services to older people in the community. Those who attended also had the opportunity to see virtual tours around Extra Care Housing, as well as reflecting on and debating what was presented by senior officers from Gwynedd Council, Gwynedd Local Health Board, North West Wales NHS Trust and Cymdeithas Tai Eryri, Cymdeithas Tai Clwyd and North Wales Housing Association.

Frequently asked questions

Increased interest is developing from older people, their carers and families about the new Extra Care Housing. Here is a few of the most frequently asked questions:-

Question : How much will Extra Care Housing cost?

Answer: The rents and service charges will vary from development to development depending on the area and exact service

Building For The Future - Residential Services for Older People in Gwynedd

“Making it easier for older people to live full and independent lives”

provided. The aim will be to ensure that the accommodation will be affordable. When the time is appropriate, anyone interested in going into the Extra Care Housing will be able to discuss their circumstances with the relevant officers as well as undertaking a preliminary financial assessment which will look at income, any savings and likely costs involved in moving into Extra Care Housing. Entitlement to financial benefits for example Housing Benefit, Pension credits, Attendance Allowance will also be looked at and assistance will be available to claim them.

Question : Extra Care Housing are quite big places – don't they get a bit lonely?

Answer: Although everyone will have their own flat with their own front door, the facilities will be easy to get around and there will be plenty of activities going on – from art groups to gentle exercise classes. Everyone can decide for themselves how much or how little they want to get involved in the community life in their local scheme. There may also be restaurant and small shop, amongst other facilities, at each Extra Care Housing development which will be a central meeting point for residents and people living in the surrounding community.

Question : What about if you're a couple, what if for example, one partner needs a lot of care but the other doesn't?

Answer: All Extra Care Housing have some flats with two bedrooms. This means it is an ideal option for couples who want to

stay together, particularly if one partner needs a lot of care but the other doesn't.

Additional FAQs can be seen on the Project's website: www.gwynedd.gov.uk/buildingforthefuture

Next milestones

Over the coming months, work will proceed on designing the new developments in Bala and the extensions to Bryn Blodau and Plas Hedd Residential Care Homes in Llan Ffestiniog and Bangor. This will be led by a design team and will involve a series of consultation meetings. Discussions will continue on developing the Extra Care Housing in Porthmadog and Bangor.

Further information

If you have any queries or require further information, please contact:

Shan Lloyd Williams,
Project Manager, Building for the Future –
Residential Services for Older People in Gwynedd,

Care Directorate, Mona Building, Caernarfon,
Gwynedd. LL55 1SH

Telephone number : 01286 679289

E-mail address :
ShanLloydWilliams@gwynedd.gov.uk

This Newsletter is available in alternative formats. Please contact the Project Manager.

