

Llŷn ac Eifionydd National Eisteddfod

Boduan near Pwllheli will become the undisputed cultural capital of Wales this August, as around 160,000 visitors from all corners of Cymru and beyond converge for the 2023 Llŷn ac Eifionydd National Eisteddfod.

Since its last three visits to Llŷn ac Eifionydd – Pwllheli in 1955, Crieth in 1975 and Porthmadog in 1987 – the Eisteddfod has transformed into a diverse 21st century festival. It now really does offer something for everyone – young, old, those who speak Welsh and those who don't, pop to traditional music lovers and those who simply want to explore the hundreds of stalls, eateries and bars.

"The Llŷn ac Eifionydd Eisteddfod will provide a boost for the Welsh language here in its heartland, and we're really looking forward to welcoming the nation to the county," said Cyngor Gwynedd Leader, Councillor Dyfrig Siencyn.

"Over the years, our local communities and Cyngor Gwynedd have led the way nationally in promoting and celebrating our Welsh language and culture. This vital work is continuing through a myriad of initiatives that are thriving in our towns and villages and on a county-wide level through our new 2023 – 2028 strategic plan.

"The Eisteddfod is the perfect opportunity for us to highlight this work and celebrate what Gwynedd has to offer. So, why not visit our Caban Gwynedd stall on the Maes to find out more and to enjoy the wide array of activities taking place throughout the week?"

Saturday 5 - Saturday 12 August 2023



Cyngor Gwynedd Cabinet members, Michael Strain, Chair of the Llŷn ac Eifionydd Eisteddfod Executive Committee; Betsan Moses, the Eisteddfod's Chief Executive and Councillor Anwen Davies, the local member for Boduan on the fields which will be the Eisteddfod's home in August.

To find out more, turn to pages 4 & 5.

Boost for three slate communities

Three of Gwynedd's historic slate communities - Bethesda, Blaenau Ffestiniog and Llanberis - are set to benefit from a new £26 million project following confirmation that the Cyngor Gwynedd-led "Llewyrch o'r Llechi" scheme has secured financial support from the UK Government's Levelling Up Fund.

Plans are being developed to transform the National Slate Museum near Llanberis, to establish new interpretation and engagement hubs in Bethesda and Blaenau Ffestiniog and to develop new and existing routes to connect the three areas with the quarries which shaped them.

"Fifteen years of tireless partnership working secured World Heritage Site status for the wider slate landscape and this new investment really is the icing on the cake," said Cyngor Gwynedd Deputy Leader, Councillor Nia Jeffreys.

"Many Gwynedd families will have ancestors who worked either in the quarries of Eryri or connected industries. Collectively they shaped the unique Welsh-speaking, working class industrial communities and culture that flourished around them.

"We can all be proud of this remarkable legacy and the fact that it is now recognised globally by UNESCO alongside The Great Barrier Reef, The Taj Mahal, Stonehenge, and the Great Wall of China.

"Our hope is that the 'Llewyrch o'r Llechi' project is just the start, and that the World Heritage designation will help us to attract funding for other slate communities across Gwynedd."

Turn to page 9 to find out more about how Bethesda, Blaenau Ffestiniog and Llanberis will benefit.



3 **Ardal Ni Tidying up Teams update**



6 **New drive to attract carers**



8 **Investing in Gwynedd's schools**



12 **Things to do in Gwynedd this Summer**

Gwynedd pupil's design to appear across Wales

A design by a Gwynedd teenager will take pride of place on road signs the length and breadth of Wales, after he won a national competition.

Noa Williams' striking red dragon design will draw motorists' attention to the new Welsh Government 20 miles per hour speed limit, which will come into force for restricted roads on 17 September 2023.

The Year 7 pupil at Ysgol Ardudwy, Harlech, was recently invited to the Senedd, where he received his prize and an image of the final plan.

Noa, said: "I was really happy that my design was chosen out of all the designs presented. I am looking forward to seeing my work on signs across Wales."

Councillor Dafydd Meurig, Cyngor Gwynedd's Environment Cabinet Member added:

"Huge congratulations to Noa on his success. It is great that his striking



red dragon design will be seen in communities all over Wales by September, to remind motorists of the new speed restrictions."

For more information about the speed limits that will come into force on 17 September 2023, head over to the Welsh Government website: www.gov.wales/introducing-20mph-speed-limits-frequently-asked-questions

The current 30mph speed limits will be reduced to 20mph in most sites in Gwynedd. But with some roads where there is justification, the restrictions will remain at 30mph. For further information on the changes in Gwynedd, go to: www.gwynedd.llyw.cymru/20mph



A word from the Council Leader

As we celebrate the arrival of summer, we can all look forward once again to some seasonal vibrancy and excitement in Gwynedd. The range of events, from the Sesiwn Fawr in Dolgellau, Ras yr Wyddfa and the Bangor half marathon, not to mention the myriad of food festivals and fairs, is living proof of the enthusiasm and commitment of our local volunteers across the county.



Councillor Dyfrig Siencyn, Leader of Cyngor Gwynedd.

This year's highlight will of course be the celebration of the National Eisteddfod's return to Llyn ac Eifionydd, in Boduan, during the first week in August. It will be an opportunity for thousands, from all parts of Wales and beyond, to see for themselves our thriving cultural traditions and to appreciate our natural landscape and environment.

It is also good to see our slate quarrying communities beginning to benefit from their status as a World Heritage Site. As reported on page 1 and page 9, there are exciting initiatives underway to connect some of these communities with the history of their quarries through a range of developments. Have you had an opportunity yet to see some of the display panels that have been placed in some of these areas? All this is part of further investment to ensure that local communities, and the economy of the whole of Gwynedd, benefit from the status throughout the year.

Whilst we always extend a warm welcome to visitors to Gwynedd, it is important that this is never at the expense of local communities and residents. Over the past few years, the impact of the pressures of excessive tourism have been seen on our communities, our environment and on the wider area's general infrastructure. Unfortunately, we have already seen some cases where parking by Llyn Ogwen has caused safety concerns during Easter this year.

As we invite everyone to Gwynedd, we encourage them to enjoy our county's splendour, but remind them at the same time to respect our people and environment. We are working closely with Eryri National Park to strengthen our response to issues arising from tourism, and we have committed to implement a Plan to see "a visiting economy for the benefit and well-being of the people, environment, language and culture of Gwynedd and Eryri."

This Plan breaks new ground and presents a way of measuring the overall impact of the visitor economy on our area, giving consideration to the impact on our language, culture and heritage, the environment and our communities.

It is imperative that tourism, an industry that is of such importance to our county, contributes towards protecting its unique characteristics so that they are safeguarded for future generations.

Plan to make a positive difference to local lives

Cyngor Gwynedd has set out its strategic priorities to enhance services and make a positive impact on the lives of local people over the next five years.

The newly published Cyngor Gwynedd Plan 2023-28 includes seven key fields that will drive various projects aimed at benefiting local people and communities:

- **TOMORROW'S GWYNEDD** - Giving children and young people the best possible start.
- **A PROSPEROUS GWYNEDD** - Strengthening the economy and supporting the people of Gwynedd to earn a decent wage.
- **A HOMELY GWYNEDD** - Supporting the people of Gwynedd to live in suitable and affordable homes in our communities.
- **A CARING GWYNEDD** - Supporting the people of Gwynedd to live full and safe lives in our communities.
- **A WELSH GWYNEDD** - Ensuring that residents have every opportunity to use the Welsh language in our communities.
- **A GREEN GWYNEDD** - Protecting the county's natural beauty and responding positively to the climate change crisis.
- **AN EFFICIENT GWYNEDD** - Putting local people at the heart of everything we do, treating people fairly and ensuring that the Council performs effectively and efficiently.

"We are delighted to share our vision and priorities to further develop and improve local services," said Cyngor Gwynedd Leader, Councillor Dyfrig Siencyn.

"In drawing up this plan, we have listened carefully to the views of local people,



Dafydd Gibbard, Cyngor Gwynedd Chief Executive; Councillor Nia Jeffreys, Cyngor Gwynedd Deputy Leader and Councillor Dyfrig Siencyn, Council Leader.

including the feedback received during the Ardal Ni public consultation exercise.

"We are determined to aim high and work hard to achieve the ambitions set out in this plan. We will be doing this despite the current

financial difficulties facing us."

The plan will be continuously reviewed, and milestones for each project set so that progress can be checked annually.

The Cyngor Gwynedd Plan is available:

- at www.gwynedd.llyw.cymru/CouncilPlan
- at the three Siop Gwynedd (Caernarfon, Pwllheli, Dolgellau)
- at your local library.

A short video introducing the Plan is also available on the website.

To request the Plan in another format, please contact the Council's Business Support Team by e-mail CynllunCyngor@gwynedd.llyw.cymru or over the phone 01766 771000.



An eco-friendly approach to keeping our communities tip-top!

Over the last few months Cyngor Gwynedd's new Timau Tacluso Ardal Ni teams have been working flat out responding to requests from local communities to tackle grot spots, nasty nooks and unclean scenes all over the county.

Regular readers of Newyddion Gwynedd may remember that we introduced the teams tasked with keeping our towns, villages and estates clean and tidy in the last edition.

"I'm really pleased with the work done by these new teams to boost community pride across the county," said Councillor Berwyn Parry Jones, Cyngor Gwynedd's Cabinet Member with responsibility for the teams.

"They have been taking on the jobs that are often over-looked and the important little things which can make a world of difference. For example, clearing away weeds on the pavement, scrubbing road-signs and fixing or replacing broken litter bins.

"This of course is in addition to the regular work carried out by Council staff such as emptying street bins, maintaining roads and pavements and dealing with fly-tipping.

"Thank you to all members of the public and community groups who have been in touch asking for the help of the Timau Tacluso. I'm also delighted to hear the positive messages from residents after the teams have visited different areas."

The dedicated staff have been able to use the Council's new eco-friendly specialist



equipment as they take on some of the more persistent problems.

Gwynedd Streetscene Manager, Peter Simpson, added: "Cyngor Gwynedd has been the first in Wales to invest in new environmentally friendly kit which safely removes graffiti without the use of polluting chemicals. We have recently been to Porthmadog, Llanwnda and Caernarfon with the new vacuum blasting machine, which removes unsightly graffiti without damaging walls or floors.

"Also, our new powerful street sweeper is 100% electric powered, making it green, quiet and very efficient. It can pick up all sizes of litter, from dust, cigarette ends and sweet wrappers, up to drinks bottles and takeaway boxes, leaving our streets spic and span."



The Tidy-up Teams at work in Caernarfon recently and (left) cleaning up graffiti in Porthmadog.



Out with the team

Have you seen the Timau Tacluso Ardal Ni teams in and around your community?

The team recently helped prepare Caernarfon for the annual Gŵyl Fwyd Caernarfon food festival – a highlight of the foodie and social calendar that attracts thousands of people to the town every year.

The team used the new street sweeper, cleared away weeds and installed extra recycling bins to ensure people went away

with the best possible impression of the town.



Next up, the teams will be helping towns and villages get ready to welcome people from all over Wales and beyond to the Llŷn ac Eifonydd National Eisteddfod at Boduan.

For the latest updates on the work of the Timau Tacluso Ardal Ni teams, follow Cyngor Gwynedd on social media.

Get in touch!

Your local Cyngor Gwynedd Councillor can help organise for the Timau Tacluso

to come to your town, village or street. Contact details for all Gwynedd Councillors are available on our website: www.gwynedd.llyw.cymru/councillors

Gwynedd makes a bee-line for pollinators

Without bees, butterflies and bugs, the wealth of wildlife which make Gwynedd a truly wonderful place is at risk. That's why the Council has committed to stemming the dramatic drop in numbers and varieties of important pollinators starting with some simple measures to help promote a varied ecosystem.

"The Council is responsible for the maintenance of almost 2,000 miles of roadside verges," said Councillor Berwyn Parry Jones, Cyngor Gwynedd Cabinet Member for Highways. "We have now adopted a new way of looking after them, allowing indigenous plants and flowers to thrive along the roadside.

"These are no longer seen as 'weeds', this is the start of a green revolution and is certainly not a cost cutting exercise. Changing our working practices will both be a visual treat as the flowers bloom in an explosion of colour, and will encourage a variety of plant life, allowing for more complex ecosystems to thrive.

"Instead of rolling out the red carpet for Eisteddfod-goers in August, we are going one better and allowing nature's own green carpet to lead the way to the Maes."

Cyngor Gwynedd's Biodiversity Officers have worked closely with the Highways teams to change practices, as Hywyn Williams, Cyngor Gwynedd Biodiversity Officer explained. He said: "In the past it was normal for the



Signs have been put up to explain the wildflowers and biodiversity project to the public.

roadside and hedges to be cut regularly, leading to a lack of biodiversity. But now, between May and July, the verges are left alone to grow and flower as nature intended, then in August the plants release their seeds ready for the next cycle.

"Between March and April and again between September and October, the roadsides are mowed once using new specialist equipment which both cuts and collects the clippings. This

prevents too much nutrient from seeping into the soil. This prevents the grass from coming back and allows wildflowers to thrive.

"Eight sites along the A499 and A497 – the main roads leading to the National Eisteddfod Maes – are the focus of this new way of working this year, and we hope to extend the trial in the future."

Go wild for the environment



No matter how big or small your outside space at home, you too can help nature thrive:

- Why not plant wildflower seeds in your garden, in a pot on the patio or in a window box?
- Don't be tempted to mow or strim the whole garden, leave as much as you can to grow and flourish.
- You can make a 'bug hotel' with old pieces of wood, stones and dried grass, giving creatures somewhere to hide.





Your Essential Guide to the Llŷn ac Eifionydd Eisteddfod

The annual National Eisteddfod of Wales is a unique festival. While thousands of Gwynedd people are veteran “Eisteddfodwyr” (regular Eisteddfod-goers), others are looking forward to visiting the festival for the first time this year.

Our message to those considering a trip to the “Maes” (Eisteddfod field) is simple – go, you’ll have a great time!

The Eisteddfod is a huge seven-day cultural festival that’s held in a different part of Wales every August. This year the Eisteddfod will visit Boduan in Llŷn ac Eifionydd between 5 and 12 August. It’s the first time the festival has visited the area since 1987, so it’s a really special occasion.

It’s almost impossible to describe everything that’s on offer at the Eisteddfod in a few sentences...

There are the traditional elements many will know about already - the cultural feast of soloists and choirs, brass bands, dance, poetry and literature all competing on the national stage.

Highlights will include the spine tingling and unique chairing and crowning of the bards ceremonies by Archdruid Myrddin ap Dafydd before hundreds of Gorsedd members, all of whom have been honoured for their outstanding contributions to the Welsh nation.

The Eisteddfod is also much more than what happens in the main pavilions. Over recent years the Maes (site) has grown and developed into a vibrant festival with hundreds of events and activities for the whole family.

Attractions include Y Babell Lŷn (Literature tent), Y Lle Celf (art gallery), Maes D (Welsh learners’ area), Ty Gwerin (Folk music tent), Pentref Plant (children’s village), Llwyfan y Maes (Maes stage) all of which offer a wide choice of performances and sessions from morning till night.

It also boasts more than 200 stalls with all sorts of societies and institutions represented as well as those showcasing and selling art and crafts, books, jewellery, quality gifts and much more.

That’s just a taste – we strongly recommend that you see for yourself!

WHAT IF I DON’T SPEAK WELSH?

No problem. You don’t have to be a fluent Welsh speaker to have a great time on the Maes.

Simultaneous translation equipment is available in the Pavilion and in sessions across the Maes - look out for the speech bubble logo on programmes.



DID YOU KNOW?

The first official ‘National Eisteddfod’ took place in Aberdare in Rhondda Cynon Taf in 1861. In 2024 the festival will return to that county.

DID YOU KNOW?

Three Gorsedd ceremonies are held during the week:

- the Coroni (Crowning) of the Bard
- the Awarding of the Prose Medal (Y Fedal Ryddiaith)
- the Cadeirio (Chairing) of the Bard.

After-hours fun at the Eisteddfod



Don’t think that the festival fun finishes when the final competitor leaves the stage – in many ways it’s only just beginning...



EVENINGS IN THE PAVILION AND CONCERTS ON THE MAES

This year’s evening programme will offer something for everyone.

Visit www.eisteddfod.wales, www.facebook.com/eisteddfod or [@Eisteddfod](https://twitter.com/Eisteddfod) on Twitter for the latest updates and announcements.

MAES B

Maes B is a contemporary after dark music festival which is part of the National Eisteddfod. It hosts some of the main artists and bands in Wales today as well as a campsite for young people.

For more details visit www.maesb.com, www.facebook.com/MaesBMaesB or [@MaesBMaesB](https://twitter.com/MaesBMaesB) on Twitter.





Cyngor Gwynedd on the Maes



Cyngor Gwynedd's home from home between 5 and 12 August will be at the heart of the Eisteddfod Maes.

Throughout the week, the Caban Gwynedd stand will host a wide range of activities with a different theme show-cased every day.

"The Eisteddfod is a perfect opportunity for us to highlight and celebrate what Gwynedd has to offer and to meet residents and visitors for a chat. Why not pop over to the Caban Gwynedd stall to say hello and see what's on?" said Cyngor Gwynedd Leader, Councillor Dyfrig Siencyn.

CYNGOR GWYNEDD'S CABAN GWYNEDD STALL WILL BE LOCATED NEAR THE MAIN ENTRANCE TO THE MAES.

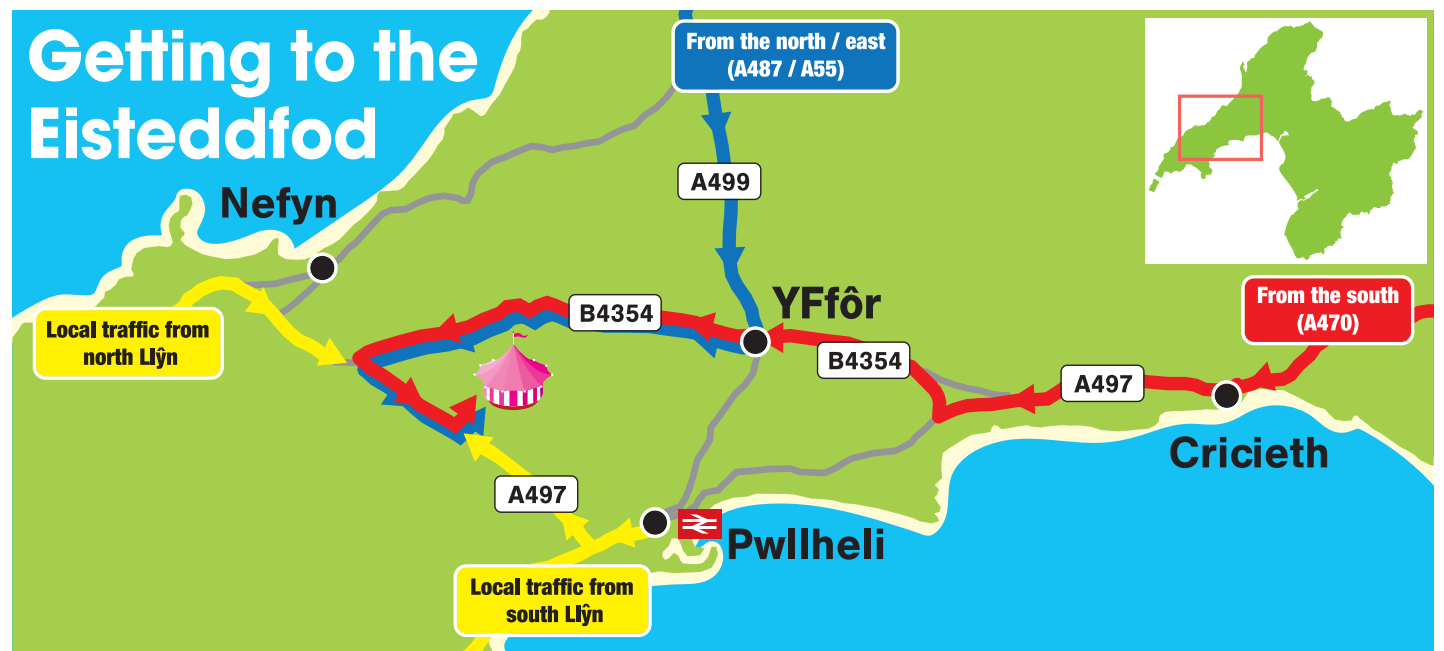
DID YOU KNOW?

Every year around 6,000 individuals compete in the various Eisteddfod competitions.

DID YOU KNOW?

The first known 'eisteddfod' was hosted by Arglwydd Rhys (Lord Rhys) in 1176. He held two competitions at Castell Aberteifi (Cardigan Castle); one in poetry and the other in music.

Getting to the Eisteddfod



BY PUBLIC TRANSPORT

In addition to the usual local bus service, a regular shuttle bus will run between Pwllheli and the Eisteddfod Maes all week, so why not come along and enjoy without having to worry about the car? The nearest train stations are Pwllheli (Cambrian Railway) and Bangor (main train line along the north of Wales).

For more information, visit:
www.tfw.wales/plan-a-journey
or www.traveline.cymru

BUS AND TAXI DROP-OFF POINTS

There will be a dedicated area for buses and taxis to pick up and drop off passengers on the north side of the A497. There will be clear signage to lead you there.

BY CAR

Follow the yellow 'Eisteddfod' signs. These signs have been installed to help everyone reach the Eisteddfod as easily and safely as possible.

- **From the south (Porthmadog):** Traffic will be diverted onto the B4354 at the Afon Wen roundabout, through Chwilog and on to Y Ffôr. Cross the crossroads at the temporary lights in the centre of Y Ffôr. Continue along the B4354 to the junction with the A497. Turn left onto the A497 and follow the road until you reach the car park.

- **From the east (Caernarfon):** Follow the A499 to Y Ffôr and turn right at the temporary lights in the centre of the village. Continue along the B4354 to the junction with the A497. Turn left onto the A497 and follow the road until you reach the car park.

Follow the signs to the car parks. Please don't park along the roadside. Please follow the instructions of the stewards at the car parks, they are there to help you arrive and leave as conveniently as possible. Parking at the Eisteddfod is free.

Allow enough travel time, especially if you need to arrive in time for a particular event. Remember, the area around the Maes will be busy, so look out for pedestrians.

BLUE BADGE HOLDERS

Visitors with a blue badge should follow the signs to the disabled car park.

THANK YOU FOR YOUR CO-OPERATION.

Win three family tickets to the Eisteddfod

For the chance to win a family day ticket to this year's National Eisteddfod (two adults and two children or one adult and three children), simply answer the following questions correctly – the answers can be found in this edition of Newyddion:

1 How many visitors are likely to visit Llŷn ac Eifonydd during the week of the National Eisteddfod?

A Around 100,000 **B** Around 130,000 **C** Around 160,000

2 How much money will be invested in Bethesda, Blaenau Ffestiniog and Llanberis through the "Llewyrch o'r Llechi" scheme?

A £10 million **B** £20 million **C** £26 million

Send us your answers and your name, address and daytime telephone number by Friday, 28 July 2023

- by e-mail: cyfathrebu@gwynedd.llyw.cymru please note "Competition" in the subject box;
- by post: Newyddion Gwynedd Competition, Communications Service, Cyngor Gwynedd, Stryd y Jêl, Caernarfon, Gwynedd, LL55 1SH.

EISTEDDFOD

New recruitment drive goes up a gear with free driving lessons and green transport

Can't drive, but want to start a career as a carer in Gwynedd? No problem.

As part of a Welsh Government funded scheme, full and part-time carers working in Gwynedd can now have up to 10 free driving lessons and a priority driving test to get them on the road in their jobs.

The Council has also invested in a fleet of eco-friendly electric cars and bikes to help Gwynedd care workers to get from A to B as they provide vital services to vulnerable people all over the county.

These initiatives form part of a wider drive to attract more people to consider a career as a carer by tackling the barriers that prevent people from going for it.

"The pressures on the health and social care sector continue to be a real worry for lots of local people and their families," said Councillor Dilwyn Morgan, Cyngor Gwynedd Cabinet Member for the Adults, Health and Wellbeing Department.

"That's why we're doing everything we can to recruit more people to these high-skilled and valued jobs."

"In a geographically large and sparsely populated county like Gwynedd, being able to drive and having access to dependable transport is a must for our carers. The significant cost of passing the driving test is one reason why many don't apply for these important jobs. The new initiative removes this hurdle and provides the individual with a useful new life skill.



Councillor Dilwyn Morgan with Danielle Finnerty, Carer (in the driving seat); Clifford Jarvis, Community Care Supervisor and Rhian Jarvis, Carer.

"There are e-bikes also available for carers working in the more urban areas of the county as they nip from one person's home to the next. The fact that our carers now use electric cars is better for the environment and will help Gwynedd meet our commitment to become carbon net zero by 2030.

"Our electric cars also double up as mobile billboards as advertisements for careers in the sector are displayed on them as they travel around the county. We hope more people become aware of the sector and get in touch to find out more about the work opportunities available."

Have you seen the video?

Watch now to be inspired to join the team!



For more information about job opportunities in the care sector here in Gwynedd:

- call Gill or Elen **07384 876908**
- e-mail gofalu@gwynedd.llyw.cymru
- visit www.gwynedd.llyw.cymru/Dare2Care



A pleasant, safe and accessible Gwynedd for people as they age



Mirain Llwyd Roberts, Cyngor Gwynedd Age-Friendly Co-ordinator.

Cyngor Gwynedd is committed to gaining the national Age Friendly accreditation within the next year.

This means that all Council departments will be expected to make sure that their services are accessible and that older people are treated with dignity and respect at all times.

"My role is to ensure that the needs of older people are taken into account when developing services and investing in resources," explained Mirain Llwyd Roberts, Gwynedd's new Age-Friendly Co-ordinator.

"I will be working closely with the different departments, councillors and partners from other organisations, as well as the community, to make sure that Gwynedd is a pleasant place for everyone, regardless of their age. Getting this right is vital, it could be the difference between older people being able to remain independent and a part of society or being alienated and side-lined.

"Around 30% of Gwynedd's population, or 35,300 out of 117,400 people, are aged 60 or older. Life does not stop when we retire, and we must recognise the huge contribution older people make to society such as helping their families, doing paid or voluntary work and being involved with social and cultural activities.

"It's also important to remember that being Age Friendly is good news for everyone whatever their age. For instance accessibility is an issue for younger disabled people, those with long-term medical condition and those who are pregnant or parents of small children."

Have your say...

Cyngor Gwynedd is keen to hear from the people of the county about good ideas and about shortcomings that disproportionately affect older people. If you have a concern or comment, please contact MirainLlwydRoberts@gwynedd.llyw.cymru or call 01286 682818.

Friendship and support under one roof

Sometimes, the simplest of ideas can seem ground-breaking.

The Rhannu Cartref Gwynedd Homeshare programme is aimed at helping solve two all-too common problems facing people – those who need a little extra help around the home to keep them independent, and those who are struggling to find a home of their own because of a lack of affordable housing and the cost-of-living crisis.

Rhannu Cartref Gwynedd Homeshare works by matching people together for mutual support. A person who has a spare room and is looking for company and a bit of practical help shares their home with someone looking for affordable accommodation.

The householder typically receives 10 hours per week of practical support provided by the homesharer such as shopping, housework or gardening. The homesharer in return gets a safe and affordable place to live.

Homeshare UK is the network for Homeshare providers operating locally across the UK and Rhannu Cartref Gwynedd Homeshare is the third of its kind to be launched in Wales. It offers people of all ages the opportunity to

live affordably in their own communities, with the right support structures in place to make it safe and enjoyable.

"Both people in the Homeshare relationship benefit from the companionship and having a friendly face at home," explained Councillor Dilwyn Morgan, Cyngor Gwynedd Cabinet Member for Adults, Health and Wellbeing Department.

"It is likely that many people in Gwynedd feel lonely and isolated, or struggle with some tasks around the house. A little help with shopping, cooking, loading the washing machine, or even taking the dog for a walk can help them to stay at home and live independently. Help to go to social activities can also be a godsend for many."

"Our communities have changed so much over the last few generations, with families living further away from each other plus the unprecedented increase in housing costs



making it difficult for some to stay within their communities. This programme could be a godsend for both parties and provide peace of mind that another trusted person is living under the same roof."

Homesharers don't pay rent but pay a monthly fee for ongoing support. They are asked to provide around 10 hours of practical help per week, but no personal care.

Cyngor Gwynedd will carry out all necessary checks on both parties to ensure the Homeshare is safe and effective.

If you're interested in the Rhannu Cartref Gwynedd Homeshare programme, either as a homeowner or homesharer, please contact Richard on homeshare@gwynedd.llyw.cymru / 07388 859015 or visit www.gwynedd.llyw.cymru/homeshare.



Claim what you're entitled to!

Are you aged 66+?

If your income is less than £201.65 per week (as an individual) or £306.85 a week (as a couple), you may be eligible for Pension Credit.

Pension Credit is separate from your State Pension and gives you extra money to help with your living costs. Claiming Pension Credit can also mean that you're entitled to benefits, such as Council Tax reduction and free TV licence for those aged 75+.

Don't miss out – to see if you're entitled and how to claim, visit www.gov.uk/pension-credit or call **0800 991234**.

More information

For details of the practical help and advice available for those struggling with the cost-of-living crisis, go to Cyngor Gwynedd's dedicated page on the website:

www.gwynedd.llyw.cymru/CostOfLivingHelp

Don't forget, you can use the free public computers and internet connection available at all Gwynedd libraries.

Developing a sustainable visitor economy

The benefits of tourism for local communities should always outweigh the disadvantages. That's why Cyngor Gwynedd has developed a Sustainable Visitor Economy Plan which includes proactive measures to protect our communities, language, culture, heritage and the local environment from the negative impacts of the industry.

One practical example of this is the new 'Arosfan' trial project. Following calls for better management of motorhome and campervan use and discussions with users and campsite owners, four Cyngor Gwynedd-owned and managed sites have been granted planning permission to be used for this purpose.

Arosfan will offer dedicated fee-paying sites for motorhomes and campervans, like the 'aires' found on the European mainland. They will be ideal for use by people on touring holidays looking for a safe and responsible place to stay overnight.

"The visitor economy is crucial to our area and we are proud that people from the four corners of the world come and visit Gwynedd and Eryri," said Councillor Nia Jeffreys, Deputy Leader of Cyngor Gwynedd and the Cabinet Member for Economic Development. "But this should not be at the expense of local people and communities.

"That's why we are working with our partners from Eryri National Park, North Wales Police and other organisations on a number of initiatives to promote a sustainable visitor economy that tackles traffic, littering and



anti-social behaviour problems in some visitor hotspots.

"Hand-in-hand with this, we hope that our new Arosfan project will be up and running by the main summer season. We are also

urging visitors to be responsible by parking in designated car parks, using public transport whenever possible and not endangering themselves or others around them when enjoying our mountains and shores."

Arosfan sites are being developed at:



- Doc Fictoria car park (former Shell site) in Caernarfon
- Y Glyn in Llanberis
- The Maes car park in Cricieth
- Cei'r Gogledd (North Quay) in Pwllheli.

Each site will have space for up to nine vans for a maximum of 48 hours. Facilities will include fresh water, chemical

wastewater, recycling and general refuse. Activities such as campfires and barbecues will not be permitted.

All the sites have been picked as they are within walking distance of key towns and destinations. Users will be encouraged to make the most of local shops, restaurants and transport links.

The Council is also working to identify a suitable site in south Gwynedd.

Music education strikes a chord



Cymru's reputation as the land of song is in good hands as children in all parts of Gwynedd have opportunities to sing, play and create music at school and in their communities.

From samba to jazz, classic to folk, and everything in-between – all schools in Gwynedd offer children musical experiences through the Welsh Government's National Plan for Musical Education.

More than £480,000 will have been allocated to Gwynedd over three years between 2021-22 and 2024-25. This is aimed at making musical education more inclusive and equitable by removing financial barriers which prevent young people from experiencing and performing music.

During its first year, Gwynedd schools have used the grant to buy instruments and equipment. The shopping list included drum-kits, ukuleles, harps and sound equipment. The focus in the second year has been on giving young people musical experiences, broadening their horizons and targeting those who have shown musical promise.

"This project is opening so many doors for our young people," explained Councillor Beca Brown, Cyngor Gwynedd's Education Cabinet Member. "It is proven that children who have the opportunity play and listen to music are

better at expressing themselves, are team players and have better educational outcomes. But more than anything, music is fun, it's social and helps our wellbeing.

"Buying a musical instrument and going for lessons is financially impossible for lots of families, especially as we're still in the midst of a cost-of-living crisis with many parents struggling to provide the basics. So, I'm delighted that this funding is available and it's great to hear about how the money is being put to good use.

"The impact of this investment can be life changing. Making sure that there are left-handed guitars available or giving children their first experience of classical music may seem like little things, but the effect on a young person's life can be huge.

"In the same vein, specific groups of children have been targeted for extra help. For instance, children who qualify for free school meals can have free music lessons and those who are studying for a GCSE in music qualify for free extra tuition or equipment to help them along the way."



Councillor Beca Brown, Cyngor Gwynedd Education Cabinet Member and some of the pupils of Ysgol Brynrefail

Over the last two years, the musical opportunities made available to Gwynedd children include...

- Over 500 musical instruments and items of technology have been purchased for 14 secondary schools;
- Around 400 items have been bought, allowing Gwasanaeth Cerdd Ysgolion Gwynedd to give Year 3 children their first experiences with musical instruments;
- Youngsters of all ages from across the county have taken part in Samba performances with Codi'r To community regeneration group;
- Drumming workshops have been held for children;
- Pupils have been able to listen to virtual performances by classical musicians via Live Music Now Cymru;
- By the end of term, foundation phase pupils from 11 primary schools will have taken part in Camau Cerdd sessions exploring pitch, rhythm, movement, composition and creating, led by Canolfan Gerdd William Mathias tutors;
- Secondary school-age singers and musicians have been meeting up to play and improvise jazz together thanks to sessions organised in partnership with Gwasanaeth Cerdd Ysgolion Gwynedd, Canolfan Gerdd William Mathias and Galeri.

Are you a pupil at a Gwynedd school and would like to learn to play a musical instrument? Please talk to your teacher. Children who are eligible for free school meals are also eligible for free music lessons. Some instruments are also available to borrow.



Investing in tomorrow's Gwynedd

Giving our children and young people the best possible start in life is one of Cyngor Gwynedd's seven strategic priorities. This commitment includes making sure that every Gwynedd child is educated in school buildings that are fit for purpose and in a good state of repair.

"We are making good progress with this important agenda," said

Cyngor Gwynedd's, Education Cabinet Member Councillor Beca Brown.

"In particular it's great to see a number of large schemes to improve facilities coming to fruition, and children and staff enjoying the new resources available to them, or looking forward to doing so shortly."

Ysgol y Garnedd, Bangor

This significant project to provide educational resources and first-class development opportunities for children in Bangor has been officially opened by Jeremy Miles MS, Welsh Government Minister for Education and the Welsh Language.

The new building combines the traditional and welcoming family feel of the old school with 21st Century teaching and learning resources including a music room, gym, multi-use community hall, a room for cooking and dedicated space for specialist units, the Cylch Meithrin and childcare.



Jeremy Miles, Welsh Government Minister for Education and the Welsh Language; Councillor Beca Brown, Cyngor Gwynedd Cabinet Member; Councillor Medwyn Hughes, Chair of Cyngor Gwynedd and Local Member Councillor Elin Walker Jones join pupils, teachers, governors, staff and others to celebrate the school's official opening.

Ysgol Bontnewydd

A brand-new green and sustainable school and community facilities are in the pipeline for Bontnewydd, following the securing of £12 million of funding from the Welsh Government.

A project developed by Cyngor Gwynedd was one of only three schemes across Wales, and the only one in the north, to win the Welsh Government's Sustainable Schools Challenge competition.

Discussions with the local community are now underway, and it is expected that specialist building consultants will shortly be appointed to design the new facilities.

A green and environmentally friendly ethos will be at the new school's core, and it will include active travel links so that most pupils can safely walk or cycle to the school.

The new facilities will make maximum use of renewable and sustainable energy, with exciting work planned to reuse as much as possible of the school's original materials to reduce the new building's carbon life cycle.

It is expected that pupils will be welcomed to their new school in 2026.

Ysgol Chwilog

Subject to planning permission, it is expected that work will begin shortly to build a new classroom, appropriate room for staff and space for one-to-one meetings at Ysgol Chwilog.

The investment will increase the school's capacity from 65 to 95 pupils, and it is expected that the work will be completed before the new school year gets underway in September 2023.

The scheme has been funded from a £1.8 million package secured from the Welsh Government to increase the capacity of three Gwynedd primary schools in communities where more than 70% of residents speak Welsh.

The planning work is continuing on similar improvements at the other two schools, **Ysgol Bro Lleu** in Pen-y-groes and **Ysgol Llanllechid**.

Ysgol Hirael

A significant investment package to improve facilities and upgrade the building and learning environment at Ysgol Hirael in Bangor is a step closer following a recent decision by Cyngor Gwynedd's Cabinet.

This investment will contribute towards significant improvements in the primary provision for children in the city of Bangor.

Ysgol Trefferthyr, Cricieth

Work is progressing well on the £8 million project to build a school on a new site in Cricieth. Pupils from the existing school recently took part in a cross beam signing ceremony to mark the completion of work on the roof of the new school building.

Funded through the Welsh Government's Sustainable Communities for Learning Programme and Cyngor Gwynedd, the new Ysgol Trefferthyr will have space for 150 pupils in six classrooms, a hall, kitchen and a multipurpose room.

When it opens in September 2024, the new facility will also boast an Early Years Unit and an Additional Learning Assessment Unit.



Ysgol Trefferthyr pupils sign the beam with Aled Roberts, Site Manager; teacher Huw Bearman and Andy Lea, Project Manager for Wynne Construction.

Help with school costs

If you're struggling with school costs help is available for school meals and other essentials. Don't miss out – check if you're eligible by visiting www.gwynedd.llyw.cymru/schoolcosts

In addition, the rollout of universal free school meals for all primary-aged children in Wales has started. Here in Gwynedd, we are ahead of target:

- all children in Reception and Year 1 have been having free meals since September 2022;
- the programme has been introduced to Year 2 since January 2023 and to Years 3 and 4 since the start of June.

"We are on course to ensure that all primary school pupils in the county receive free school meals from September 2023 onwards," said Councillor Beca Brown, Cyngor Gwynedd's Education Cabinet Member.

"I'm also delighted that Gwynedd was one of the first counties in Wales to roll out the scheme to Year 2, 3 and 4 pupils.

"Even with free school meals being rolled out to all primary school children, it's still really important that families who would have otherwise been eligible for free school meals register. Otherwise, they could miss out on help such as school uniform vouchers and equipment for activities outside the classroom.

"Sending a child through school, fully kitted out and ready to learn can be expensive, so I would urge families to make sure that they get all the help available either by visiting the website or asking at their school."



Regeneration boost for three slate communities



Continued from page 1

“Llewyrch o’r Llechi” is the first major project to secure funding as part of Cyngor Gwynedd’s vision to make the most of the World Heritage Site status.

The aim is to use this new global status as a springboard to regenerate slate communities and create high quality jobs for local people in their own square mile. This will be done by developing a

sustainable tourism sector and sharing the fascinating story of the area’s rich slate heritage with local people and visitors alike.

“We want to celebrate and harness our industrial past to create exciting new opportunities for the benefit of present-day communities and businesses in Gwynedd,” explained Lord Dafydd Wigley, Chair of the Wales Slate

Partnership Steering Group.

“Llewyrch o’r Llechi’ is the first such project and will do exactly that – use our history to start a new journey that will leave a lasting economic and cultural legacy for today’s Gwynedd and for future generations.”



By 2026, the £26million “Llewyrch o’r Llechi” investment will deliver:

Hwb Dinorwig (Llanberis):

- **Re-development of the National Slate Museum** – conservation work on the main building and the re-purposing of rooms for use as education and interpretation spaces.
- **Improvements to Parc Padarn** – new paths and improvements to existing paths, new interpretation and information boards, new toilets, new visitor resources (bike racks, charging points), the repurposing of historical buildings (Hafod Owen) to create a space for volunteers, a purpose-built facility for diving in Chwarel Vivian quarry, space to re-locate the Fire Queen engine.



Hwb Ogwen (Bethesda):

- **Yr Hen Bost** – a Partneriaeth Ogwen project to re-develop the former Spar Building into a new heritage centre that will include a cafe, creative space, and business units.
- **Neuadd Ogwen** – a Cwmni Tabernacl project to improve the concert venue.
- **A new walking and cycling path to link Bethesda with Chwarel Penrhyn quarry.**



Hwb Ffestiniog (Blaenau Ffestiniog):

- **Town Centre improvements** - Antur Stiniog will lead this project to redevelop two empty high street shops into business units, flats, and a creative space; and upgrade the Aelwyd yr Urdd facility in the community centre.
- **A new walking and cycling path to link Blaenau Ffestiniog with Chwarel Llechwedd quarry.**



All three communities will also benefit from smaller initiatives to improve street furniture, install new interpretation boards, create new community art, and improve historically important monuments in the three areas.



The Council is working on projects which will benefit other communities within the wider slate producing areas. Keep an eye out for new developments.

Did you know...

- The World Heritage Site is made up of six distinct areas:
 - ✓ Penrhyn Slate Quarry and Bethesda, and the Ogwen Valley to Port Penrhyn
 - ✓ Dinorwig Slate Quarry Mountain Landscape
 - ✓ Nantlle Valley Slate Quarry Landscape
 - ✓ Gorseddau and Prince of Wales Slate Quarries, Railways and Mill
 - ✓ Ffestiniog: its Slate Mines and Quarries, ‘city of slates’ and railway to Porthmadog
 - ✓ Bryneglwys Slate Quarry, Abergynolwyn Village, and the Tallylyn Railway
- It was said that slate from Gwynedd roofed the world! It can be found all over the world and, by the end of the 19th century, enough slate had been produced here to roof around 14million terrace houses.
- Gwynedd’s quarries exported workers, skills, knowledge, and technology to every corner of the globe. The Darjeeling Railway in India is based very closely on the Ffestiniog Railway.
- The longest dispute in British industrial history took place at Penrhyn Quarry, Bethesda. “The Great Strike of Penrhyn” lasted three years.
- In July 2021, the slate communities of Gwynedd became the UK’s latest World Heritage Site, the fourth site in Wales and the second in Gwynedd alongside the Castles and Walled Towns of Edward I (Caernarfon, Harlech, Conwy and Beaumaris).



Why not explore the fascinating history of Welsh Slate this summer?

Turn to page 12 for more information or visit www.llechi.cymru

@llechicymru



Supporting vulnerable people at risk of homelessness

Homelessness is a complex issue that's affecting hundreds of people in Gwynedd right now, and the issue has intensified in recent years due to the housing and cost-of-living crisis and the side effects of the pandemic.

Cyngor Gwynedd is working in partnership with the local Health Board to develop an innovative project that aims to stem this tide and prevent people from becoming homeless in the first place.

"Many of us may think of homelessness as a purely economic problem," said Councillor Craig ab Iago, Cyngor Gwynedd Cabinet Member for Housing and Property. "While this is true to some extent, it's far more complicated than that.

"Issues such as mental health problems or substance misuse, alongside relationship breakdowns or losing a job, are major causes of homelessness. This is in addition to the cost-of-living crisis and an unregulated housing market which prices people out of their communities.

"I'm therefore delighted that the Council is working in partnership with Betsi Cadwaladr University Health Board to boost support to vulnerable people, by offering timely support and assistance to tackle some of the root causes of homelessness."

As part of the partnership, two new dedicated officers in the field of mental health and substance misuse have recently been appointed and are already making a positive impact, assisting more than 40 individuals throughout Gwynedd so far.

"Building on our working relationship with the Health Board to support vulnerable people is an essential part of



Craig Hughes from the Substance Misuse Service at Betsi Cadwaladr Health Board and Catrin Roberts, Senior Housing Solutions and Mental Health Case Worker for Cyngor Gwynedd.

the jigsaw if we are to help tackle some of the root causes of homelessness," explained Catrin Roberts, who recently started work as a Senior Housing Solutions and Mental Health Case Worker with Cyngor Gwynedd.

"I work closely with Craig Hughes from the Substance Misuse Service at Betsi Cadwaladr Health Board, which is a position funded by Cyngor Gwynedd.

"By offering timely multi agency support, we can reduce the risks caused by drugs or alcohol to individuals, families, and the local community and help prevent problems and difficult situations from escalating in the first place.

"By working together to address a person's health and well-being, we can create a support network which will help individuals regain stability in their lives and help prevent homelessness."

Busting myths about homelessness

Some misconceptions exist about people experiencing homelessness, leading sometimes to a lack of understanding towards people who find themselves in this difficult situation.



Equally, and tragically, some people don't realise that they are eligible for help as they are either homeless or at risk of becoming homeless.

Here, we challenge some of these myths, so that people get the right support and understanding...

Myth #1: Homelessness means sleeping rough

Homelessness is not just people sleeping on the street, it can also mean that someone does not have a stable home despite having a roof over their head.

"Hidden homelessness" is the term used to describe a situation where an individual is "sofa surfing", staying in temporary accommodation, staying with friends or family,

or living in unsuitable or unsafe conditions. All these situations leave a person extremely vulnerable, and often they are not aware that help is available from the Council.



Myth #2: Homelessness is a choice

Homelessness is caused by a combination of complex factors and often people fall victim to circumstances beyond their control. These include not being able to afford housing or pay rent; financial difficulties or debt; physical or mental health problems; substance abuse issues; domestic abuse or family problems.

Homelessness is caused by a combination of complex factors and often people fall victim to circumstances beyond their control. These include not being able to afford housing or pay rent; financial difficulties or debt; physical or mental health problems; substance abuse issues; domestic abuse or family problems.

Myth #3: The Council can only help you if you need emergency shelter

Cyngor Gwynedd can assist anyone who is homeless or is at risk of homelessness.

There is no such thing as a 'typical' homeless person and the help needed will vary according to the individual's

Are you finding it difficult to buy a suitable house on the open market?

Gwynedd Homebuy

This scheme offers equity loans so that qualified applicants can buy a house on the open market.

Eligible applicants can borrow between 10% and 50% of the value of the home they want to buy

They will need to have a household income of less than £60,000

They can buy a property worth a maximum of £300,000 (subject to a financial assessment).

To find out about the Gwynedd Homebuy scheme go the website: www.gwynedd.llyw.cymru/Homebuy

Additionally, Cyngor Gwynedd offers other housing schemes, such as...

- **Bringing empty homes back to life** – we have several schemes, including grants and interest-free loans.
- **Working with the private rented sector** – the Leasing Scheme Wales: Gwynedd scheme gives landlords the opportunity to lease property for a guaranteed monthly rental income from the Council. Support is also available to tenants throughout their tenancy.
- **The Tŷ Gwynedd project** – Cyngor Gwynedd is building affordable houses throughout the county. The Tŷ Gwynedd project aims to help local people who can't buy or rent on the open market, but don't qualify for social housing.

These initiatives all form part of the the Council's Housing Action Plan to ensure that the people of Gwynedd have access to suitable, high quality and affordable housing in their own communities.

For more information about what's on offer, visit www.gwynedd.llyw.cymru/housing



To find out if you're eligible to apply for one of the projects which help people rent or buy a home, and to register your interest, go to the Tai Teg website: www.TaiTeg.org.uk

circumstances, this may include:

- guidance and support regarding housing matters,
- emergency accommodation,
- advice about keeping a home or finding a new home.

Are you at risk of being made homeless?

This could be because of mental health problems, family problems or financial issues.

Help is available – visit www.gwynedd.llyw.cymru/homelessness or call 01286 685100



Have your say

The Council wants local people to take advantage of every opportunity to shape the services and priorities for their area. To see how you can share your opinions, go to the website: www.gwynedd.llyw.cymru/HaveYourSay

There is currently the opportunity to give feedback on the Council's Equality Objectives for 2024-28 with the survey open until 31 July.

At the moment, the Council has five Equality Objectives and we want to know if you think they should be kept as they are, keep some of them, and / or adopt new ones.

As well as feedback from the questionnaire, we will take into consideration a variety of factors as we look at the objectives, such as data about equality features, new Welsh Government Action Plans and other Council plans.

To share your views, visit the website: www.gwynedd.llyw.cymru/EqualityObjectivesQuestionnaire

If you require a paper copy of the questionnaire, or in another language or format, please phone 01286 679708 or email cydraddoldeb@gwynedd.llyw.cymru
Paper copies are also available from Gwynedd libraries and the Sioop Gwynedd one-stop shops (Pwllheli, Caernarfon and Dolgellau.)



Apprenticeship and Cynllun Yfory schemes go from strength to strength

CYNLLUN YFORY
GRADDEDIGION
GRADUATES

APPRENTICESHIPS.
A GENIUS DECISION

Up to 20 apprentices and up to five professional trainees will start their new careers with Cyngor Gwynedd in the summer and autumn after a record number of people applied for the positions.

Almost two hundred applications were received, all vying for the opportunity to start an excellent career, get experienced support and gain valuable qualifications whilst also earning a salary.

"We want as many local people as possible to stay in Gwynedd, or return after living away, and realise their potential here within the county," said Cyngor Gwynedd's Corporate Support Cabinet Member, Councillor Menna Trenholme.

"Our Apprenticeships and Graduate Scheme (Cynllun Yfory) are central to this vision, and it's fantastic to see such a positive response to this year's recruitment campaign.

"By September, over 90 people will have benefitted from a wide range of career opportunities since Cyngor Gwynedd launched its Graduate scheme in 2017 and Apprenticeship scheme in 2019.

"We are determined to build on this success, and I would urge those who are at school, college or University thinking about their future, or people considering a career change, to keep an eye out for the 2024 apprenticeships and professional traineeships opportunities which will be advertised from the autumn onwards," Councillor Trenholme added.



Morgan Jones, Finance Apprentice



Hannah Williams, Events Management Professional Trainee



Does the idea of gaining qualifications for a career with Cyngor Gwynedd while being paid appeal to you? Especially when you can do this in your own community without having to move away to find opportunities?

The breadth of opportunities is wide, including engineering, working with vulnerable children or adults, IT, legal services, accountancy, sports science, business and

environmental services. Cyngor Gwynedd may well have the perfect career to meet your passion, skills and ambitions.

To find out more or to register your interest, visit www.gwynedd.llyw.cymru/apprenticeships or www.gwynedd.llyw.cymru/cynllunyfory-en



A summer of Fun with Byw'n Iach

Byw'n Iach has a wide choice of activities for all the family this summer. There are 11 leisure centres dotted around the county. The programme and facilities for each centre can be seen on the www.bywniach.cymru website.

ACTIVITIES FOR KIDS AND FAMILIES

Opportunities to keep children busy during the holidays include...

- ✓ Free Sports Camps
- ✓ Free Swimming
- ✓ Children's intensive Swim Courses
- ✓ Free Soft play sessions
- ✓ Bubble Swim sessions for the little ones
- ✓ Free Play Sessions for children with additional needs.

Young people between 11 and 15 can also register to complete a Fitness Passport programme so that they can use the gym independently and access free fitness classes during the holidays.

"With money tight for so many families this year we've come up with different free or low-cost schemes allowing families to have fun and be active," explained Amanda Davies, Managing Director.

"As part of the "Chwarae Allan" project we're working with Cyngor Gwynedd's Youth Service and North Wales Police to allow access to all our synthetic pitches and external courts free of charge throughout the school holidays for children, young people and their families."

"We've also created a special day ticket for families looking for something to do indoors at the weekend or during the holidays. For £13.80 with a Byw'n Iach card or £18 without, the whole family can spend the day in a centre swimming, playing badminton, tennis, squash or table tennis.

"A fleet of electric bikes is also available for hire at a

reasonable price from the Arfon, Bangor, Plas Silyn and Penllyn centres. What better way to explore Gwynedd than to hop on a bike, with the added bonus of a little help on the hills?!

"We are very grateful to Cyngor Gwynedd, the Welsh Government and Sport Wales for their funding for our free summer activities."

ACTIVITIES FOR ADULTS

Byw'n Iach also offers a wide range of opportunities for adults with Direct Debit fitness membership starting from £26.80 per month for unlimited use of the gym, classes, swimming, racket sports, adult swimming lessons and use of electric bikes.

ACTIVITIES FOR OLDER PEOPLE

Active for Life activities are perfect for older people, or anyone looking for a lower intensity and social activity. Weekly sessions are held in each centre for a special price of £3, which includes access to the gym, low intensity fitness classes and sports such as badminton, table tennis or even pickleball.

Older people can also join the free weekly swim session for those 60+ at each pool.

BYW'N IACH AT THE EISTEDDFOD

The Byw'n Iach team is also busy preparing for the Llŷn ac Eifonydd National Eisteddfod.

"Come and see us on the Maes where we will be holding all sorts of fun activities," said Amanda.

"We will also be extending a warm welcome for Eisteddfod goers to use the facilities at our 11 centres."



To find out more, follow Byw'n Iach on Facebook, Twitter, Instagram or visit www.bywniach.cymru You can also download the Byw'n Iach App or pop in for a chat with the friendly Byw'n Iach team in our centres.



Darganfod Gwynedd yr haf yma

Mae llu o bethau i'w gweld ac i'w gwneud yng Ngwynedd yr haf hwn, gan gynnwys nifer o weithgareddau sydd yn rhad ac am ddim. Dyma i chi flas o rai o'r uchafbwyntiau...



LLWYBR ARFORDIR CYMRU

Mae'r Llwybr Arfordir yn dilyn arfordir Gwynedd gyfan ac yn ymestyn 180 milltir drwy dirwedd amrywiol yr ardal. O gilfachau bychain a thraethau eang i rostiroedd gwyllt a choedwigoedd, mae'n gyfle i fwynhau a gwerthfawrogi byd natur a threftadaeth y sir.

Am fwy o wybodaeth ewch i www.ymweldageryri.info/cy/llwybr-arfordir-cymru-chylchdeithiau-cerdded

WALES COAST PATH

The Coast Path follows Gwynedd's coastline and stretches 180 miles through the area's varied landscape. From small coves and long sandy beaches to wild heathland and forests, it's an opportunity to enjoy the county's wildlife and heritage.

For more information go to www.ymweldageryri.info/wales-coast-path-and-circular-walks



DIGWYDDIADAU HAF LLYFRGELLOEDD GWYNEDD

A ydych chi yn barod am y Sialens Ddarllen eleni? Bydd yn rhedeg drwy gydol gwyliau'r haf yn ogystal â rhaglen lawn a chyffrous o weithgareddau ymhob Llyfrgell yng Ngwynedd.

I weld y rhaglen digwyddiadau, ewch i www.gwynedd.llyw.cymru/lyfrgell neu cysylltwch a'ch llyfrgell leol.

GWYNEDD LIBRARIES SUMMER EVENTS

Are you ready for this year's Reading Challenge? It will run throughout the summer holidays as well as a full and exciting programme of activities in each Library in Gwynedd.

To view the event programme, visit www.gwynedd.llyw.cymru/library or contact your local library.

EISTEDDOD LLŶN AC EIFIONYDD

Mae manylion llawn am yr Eisteddfod ar dudalennau 4-5. Am ragor o wybodaeth ewch i www.eisteddfod.cymru

LLŶN AC EIFIONYDD NATIONAL EISTEDDFOD

Full details about the Eisteddfod on pages 4-5. For more information go to www.eisteddfod.wales

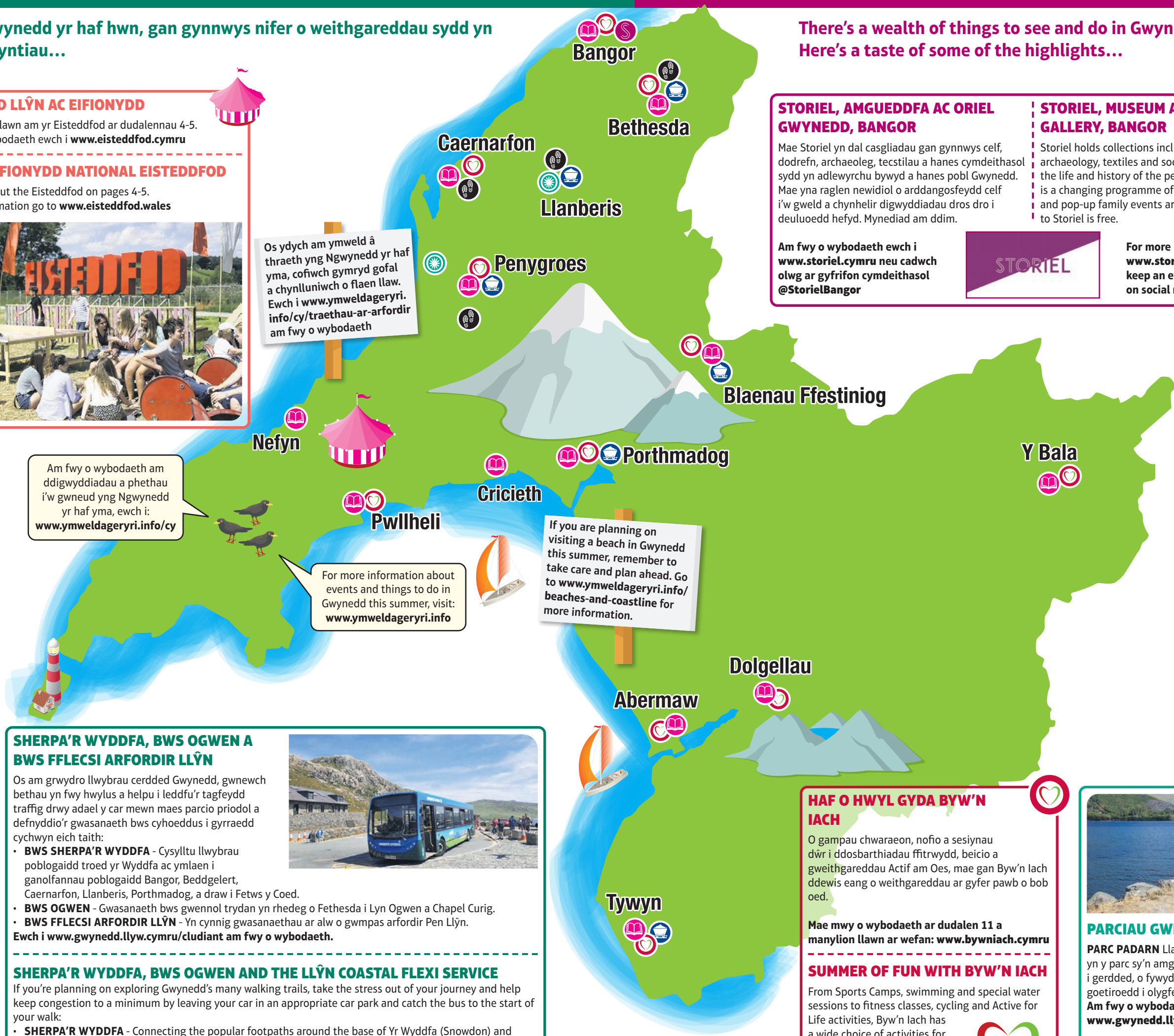


Os ydych am ymweld â thraeth yng Ngwynedd yr haf yma, cofiwch gymryd gofal a chynlluniwch o flaen llaw. Ewch i www.ymweldageryri.info/cy/traethau-ar-arfordir am fwy o wybodaeth

Am fwy o wybodaeth am ddiwyddiadau a phethau i'w gwneud yng Ngwynedd yr haf yma, ewch i: www.ymweldageryri.info/cy

For more information about events and things to do in Gwynedd this summer, visit: www.ymweldageryri.info

If you are planning on visiting a beach in Gwynedd this summer, remember to take care and plan ahead. Go to www.ymweldageryri.info/beaches-and-coastline for more information.



Exploring Gwynedd this summer

There's a wealth of things to see and do in Gwynedd this summer including many free activities. Here's a taste of some of the highlights...

STORIEL, AMGUEDDFA AC ORIEL GWYNEDD, BANGOR

Mae Storiell yn dal casgliadau gan gynnwys celf, dodrefn, archaeoleg, tecstilau a hanes cymdeithasol sydd yn adlewyrchu bywyd a hanes pobl Gwynedd. Mae yna raglen newidiol o arddangosfeydd celf i'w gweld a chynhelir digwyddiadau dros dro i deuluoedd hefyd. Mynediad am ddim.

Am fwy o wybodaeth ewch i www.storiell.cymru neu cadwch olwg ar gyfrifon cymdeithasol @StoriellBangor

STORIEL, MUSEUM AND GALLERY, BANGOR

Storiell holds collections including art, furniture, archaeology, textiles and social history which reflect the life and history of the people of Gwynedd. There is a changing programme of art exhibitions to see and pop-up family events are also held. Admission to Storiell is free.

For more information visit www.storiell.cymru and also keep an eye on @StoriellBangor on social media.



SAFLE TREFTADAETH Y BYD LLECHI CYMRU

Trowch i dudalen 9 am y diweddaraf am y prosiect. Os hoffech brofi peth o dreftadaeth unigryw'r ardal ar droed, beth am gerdded y Llwybr Llechi?

Mae manylion llawn ar y wefan: www.snowdoniaslatetrail.org/cymraeg

SLATE LANDSCAPE WORLD HERITAGE SITE

Turn to page 9 for the latest news about the project. If you would like to experience some of the area's unique heritage on foot, why not take on the Slate Trail?

Full details available on the website: www.snowdoniaslatetrail.org

LONYDD GLAS

Mae Lonydd Glas Gwynedd yn deithiau unigryw a sefydlwyd ar hyd hen reilffyrdd yn bennaf, sydd erbyn heddiw yn creu rhydwaiha eang. Mae'r rhain yn llwybrau aml ddefnydd, di-draffig a diogel a cheir cyfoeth o fywyd gwyllt a bioamrywiaeth ar hyd y daith.

Am fwy o wybodaeth ewch i www.gwynedd.llyw.cymru/lonyddglas



LONYDD GLAS

Lonydd Glas Gwynedd are unique journeys established mostly along old railways which today create a wide network. These are multi-use, traffic-free and safe routes with a wealth of wildlife and biodiversity along the journey.

For more information go to www.gwynedd.llyw.cymru/RecreationalRoutes

HAF O HWYL GYDA BYW'N IACH

O gampau chwaraeon, nofio a sesiynau dŵr i ddsparthiadau ffitrwydd, beicio a gweithgareddau Actif am Oes, mae gan Byw'n Iach ddeuwis eang o weithgareddau ar gyfer pawb o bob oed.

Mae mwy o wybodaeth ar dudalen 11 a manylion llawn ar wefan: www.bywniach.cymru

SUMMER OF FUN WITH BYW'N IACH

From Sports Camps, swimming and special water sessions to fitness classes, cycling and Active for Life activities, Byw'n Iach has a wide choice of activities for all ages.

Turn to page 11 for more information, or visit: www.bywniach.cymru



PARCIAU GWLEDIG

PARC PADARN Llanberis - Mae llu o bethau i'w gwneud yn y parc sy'n amgylchynu Llyn Padarn. O chwaraeon dŵr i gerdded, o fywyd gwyllt i dreftadaeth ddiwydiannol, o goetiroedd i olygfeydd mynyddig i'ch ysbrydoli. Am fwy o wybodaeth ewch i www.gwynedd.llyw.cymru/parcpadarn

PARC GLYNLLIFON Darganfodddwch erddi hanesyddol helaeth gyda llwybrau cerdded drwy'r coedwigoedd. Mae hefyd siop, unedau crefft a chaffi ar y safle. Ewch i www.gwynedd.llyw.cymru/parcglynlifon am fwy o wybodaeth.



COUNTRY PARKS

PARC PADARN Llanberis - There's plenty for visitors to do in the park which surrounds Llyn Padarn. From water sports to walking, from wildlife to industrial heritage, from woodlands to mountain views to inspire you. For more information go to www.gwynedd.llyw.cymru/padarncountrypark

PARC GLYNLLIFON Discover extensive historic gardens with paths through the woods. Visit the shop, craft units and cafe on site. Go to www.gwynedd.llyw.cymru/parcglynlifon-en for more information.